

VIRGINIA'S INDUSTRIAL ADVANCEMENT ALLIANCE (VIAA)

Strategically situated along I-81 at its crossroads with I-77, VIAA offers market access to two-thirds of the U.S. population within a day's truck drive. The VIAA represents a population of nearly 194,000 in six counties and two cities in southwestern Virginia. The extended labor market area has a population of more than one million. The civilian labor force totals 567,837 with 95,831 in the VIAA and 472,006 in the extended labor area. Virginia is the northernmost right-to-work state on the East Coast and the unionization rate in the region is less than three percent. A key location, an available workforce with outstanding training opportunities, superb quality of life, and a low cost of doing business are huge advantages for locating in VIAA.

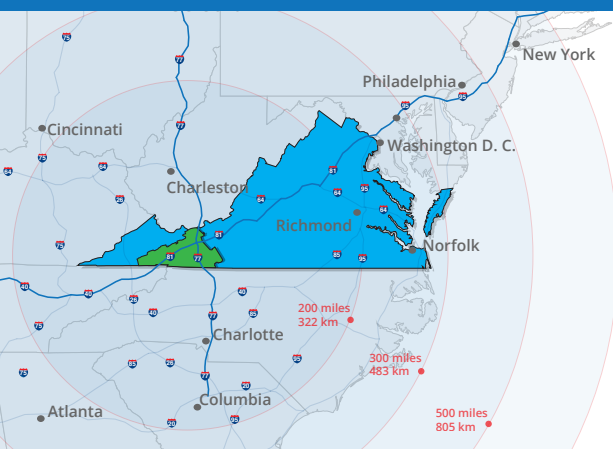


Highlands Business Park is a 302-acre regional industrial park in Glade Spring, VA. Located near I-81 Exit 29 between Roanoke, VA and Knoxville, TN, this park is approximately 47 miles to I-77 and 48 miles to I-16. Highlands Business Park is a joint venture between Washington and Smyth Counties. Multiple lots are currently available and range in size from six acres upwards to a 51-acre site featuring a 40-acre graded pad.

302 acres near Exit 29, Interstate 81, Glade Spring, VA

Utility Infrastructure

- **Electrical** — 3 Phase and 12.5 KV Voltage available. Alternate feed available.
- **Natural Gas** — 4" gas line in park; 100,000 cf.hr.
- **Water** — 12" water line.
- **Wastewater** — 8" sanitary sewer, 630,000 gpd treatment plant adjacent to site.
- **Telecommunication** — Redundant fiber through BVU Optinet and CenturyLink.

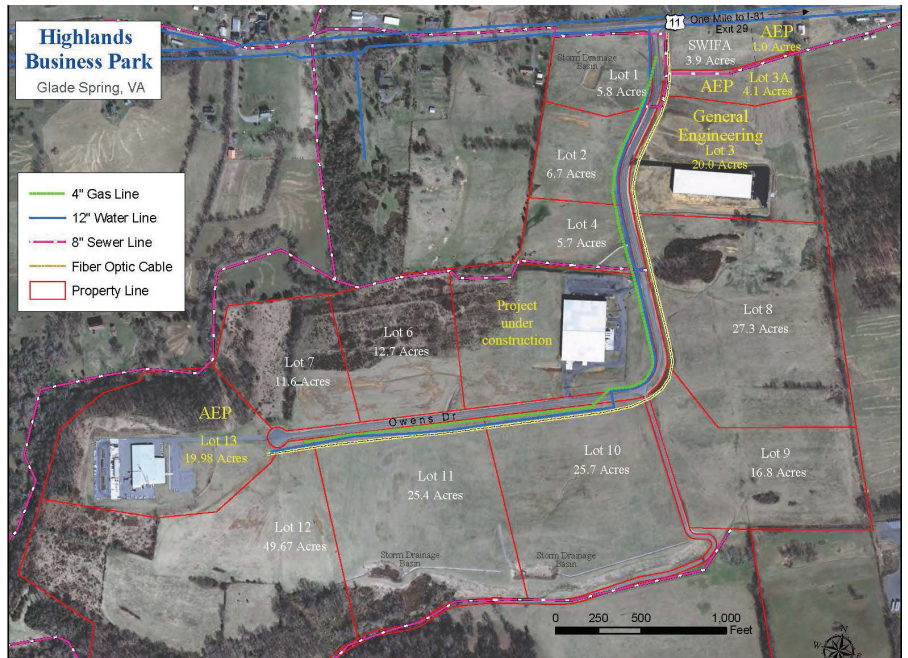
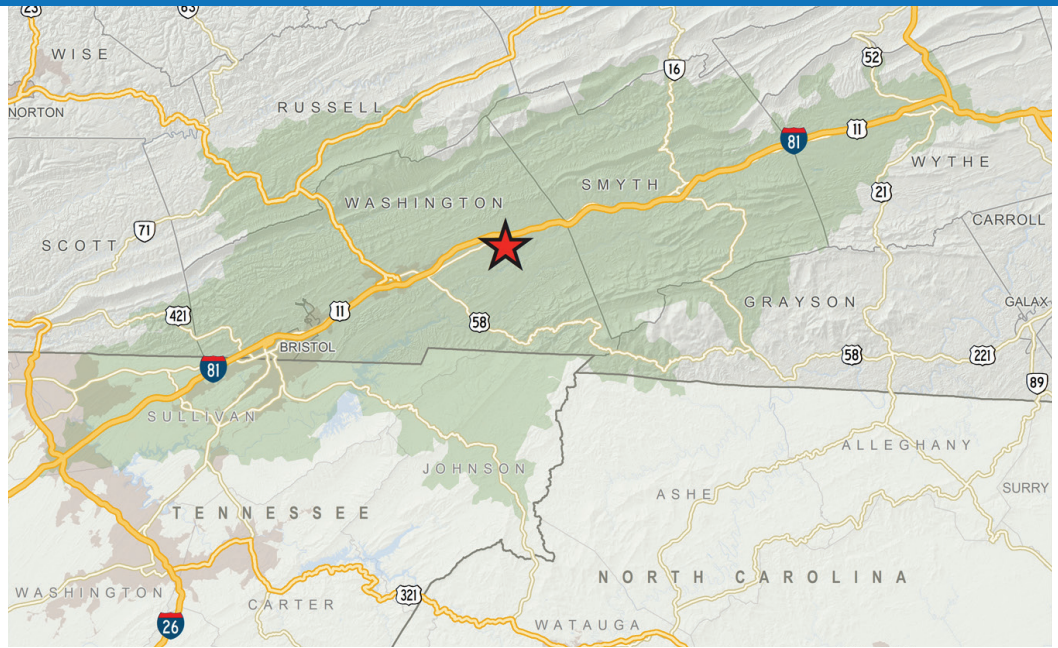


VIAA offers a strategic location at the intersection of I-81 and I-77 in Southwest Virginia.

HIGHLANDS BUSINESS PARK



- Located one mile from Exit 29 of Interstate 81
- Site has all infrastructure in place to park, including state maintained road, water, sewer, power, natural gas, fiber, storm drainage, and street lights
- 40-acre graded pad ready-to-go
- Zoned M-2, Industrial
- Enterprise Zone with incentive grants



Josh Lewis
 Executive Director
 P.O. Box 983, Marion VA 24354
 Jlewis@viaalliance.org
 276-783-6949
 www.viaalliance.org



Whitney Bonham
 Deputy County Administrator/
 Director of Economic Development
 and Community Relations
 1 Government Center Place
 Suite A Abingdon, VA 24210
 wbonham@washcova.com | 276.525.1300
 www.viaalliance.org



Lori Hester Deel
 Director of Community and Economic Development
 121 Bagley Circle Suite 100
 Marion, Virginia 24354
 ldeel@smythcounty.org | 276.783.3298 ext. 8312
 C. 276.685.1569
 F. 276.783.9314
 www.smythcounty.org