

## DEMOGRAPHICS

Labor Force 2020	
MRRP Region	86,455
Extended Labor Market Area	535,271
TOTAL	621,726
Unemployed 2020	
MRRP Region	3.5%
Extended Labor Market Area	3.8%
Unemployed 2020	
MRRP Region	3,025
Extended Labor Market Area	20,340
TOTAL	23,365
Underemployed 2020	
MRRP Region	10,910
Extended Labor Market Area	52,440
TOTAL	63,350

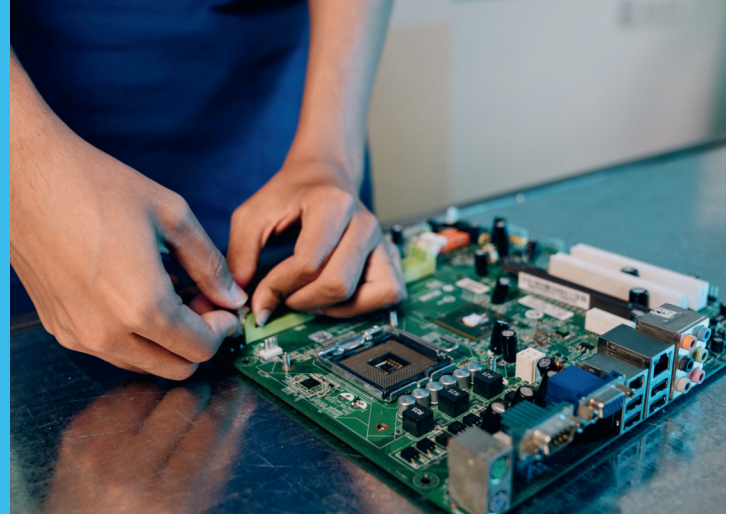
Under 5% unionization rate

## TAXES

- Notable low 6% corporate income tax rate
- Tax credits for job creation and investment
- Worker's compensation insurance cost: 50% of national average, third lowest in the nation
- Unemployment insurance tax: 40% of national average, sixth lowest in the nation
- No franchise or net worth tax
- Right-to-work state

## Manufacturing Sales and Use Tax Exemption

- Tax exemptions include tangible personal property used directly in the product production. Other tax-exempt production expenses include machinery, tools, repair parts, fuel, power, energy, materials, and supplies that are used directly in manufacturing or processing products for sale or resale.
- Manufacturers do not pay tax on purchases used for production; distributors do not pay tax on items purchased for resale.
- The State of Virginia has NO TAX on: intangible property, manufacturers' inventory, and corporate aircraft.



## Information Technology Companies within 100-mile radius

Company Name	Location	NAICS Description	Employees
CGI Technologies and Solutions, Inc.	Lebanon, VA	Computer Systems Design Services	250 to 499
Northrup Grumman	Lebanon, VA	Computer Systems Design Services	250 to 499
Meridium, Inc.	Roanoke, VA	Custom Computer Programming Services	250 to 499
Harmonia Holdings Group, LLC	Blacksburg, VA	Custom Computer Programming Services	100 to 249
1901 Group, LLC	Blacksburg, VA	Computer Systems Design Services	< 100
Advanced Logic Industries, Inc.	Blacksburg, VA	Computer Systems Design Services	< 100
New City Media, Inc.	Blacksburg, VA	Data Processing, Hosting, and Related Services	< 100

## Median Salary

for selected information technology occupations

Occupation	MRRP Median Hourly	Virginia Median Hourly	US Median Hourly
Computer Network Architects	\$50.14	\$62.67	\$61.01
Information Security Analysts	\$53.24	\$62.56	\$57.63
Computer Systems Analysts	\$31.82	\$50.90	\$51.70
Network and Computer Systems Administrators	\$35.99	\$49.93	\$43.52
Software Developers	\$48.84	\$62.97	\$61.18
Database Administrators	\$37.08	\$47.40	\$48.03
Web and Digital Interface Designers	\$34.89	\$36.82	\$40.02
Computer Occupations, All Others	\$24.53	\$57.85	\$47.47

Data: Bureau of Labor Statistics (May 2022)

# INFORMATION TECHNOLOGY

## EDUCATION & WORKFORCE

### Virginia Tech's Department of Electrical and Computer Engineering

The Bradley Department of Electrical and Computer Engineering is one of the country's largest ECE institutes. Along with ECE, Virginia Tech offers:

- Engineering Minor in Cybersecurity
- BS in Computer Engineering - Cyber Operations track
- BS in Computer Engineering - Major in Networks and Cybersecurity
- BS/MS Program - CyberCorps scholarship for service
- CyberLeaders Program
- Online Master of Information Technology with 11 optional areas of specialization



### Wytheville Community College

- Offers approximately 30 academic programs and Career Readiness Certificate Testing
- Associate Programs in Machining Technology
- Provides Level 1 certification in Welding and Mechatronics
- Proud partner to local industry

### Virginia Highlands Community College

- Provides 45 academic areas of study and Career Readiness Certificate Testing
- 15 Certificate Programs geared specifically toward community, manufacturing, and workforce development
- Provides Level 1 Manufacturing Technician certification
- Proud partner to local industry



## LOGISTICS

Located within a day's drive for more than half the US population, with access to:

- I-81
- I-26 within 30 minutes
- I-77
- I-40 within 60 minutes

Plus, easy access to other infrastructure; Norfolk Southern's main line runs through the region.



## AIRPORTS

### Tri-Cities Regional Airport (30 miles)

Delta, American Airlines, Allegiant Air • Nonstop flights to Atlanta, Charlotte, Orlando, and Tampa

### Roanoke Regional Airport (1 hour)

Allegiant Air, American Airlines, Delta, United Airlines  
Nonstop flights to Atlanta, Charlotte, Chicago, Orlando, Philadelphia, St. Petersburg, Washington DC, New York

### Charlotte-Douglas International Airport (2 hours)



## SEAPORTS

### Port of Virginia (350 miles)

Two Class I railroads on-dock (more than 30 miles of on-dock rail) • Six terminals • 1,864 acres

### Port of Charleston (350 miles)

### Port of Savannah (376 miles)



## UTILITIES

### Electricity

Appalachian Power - New customers with more than a 1,000-kW load may receive an economic development rate that reduces their demand rate charge by 25% each year for the first five years of operation.

Tennessee Valley Authority (TVA) - Qualified economic development projects locating to TVA through TVA Economic Development

### Natural Gas

Atmos Energy

Appalachian Natural Gas

### Telecommunications

Heavy-fiber infrastructure to majority of industrial parks and sites. Capacity exceeding 1 gigabit available in many locations. Service providers include Century Link.

*Strategically situated at the crossroads of I-81 and I-77, the MRRP footprint offers a key location, an available workforce with outstanding training opportunities, superb quality of life, and a low cost of doing business— all huge advantages to locating in the region.*



[i81-i77crossroads.com](http://i81-i77crossroads.com)