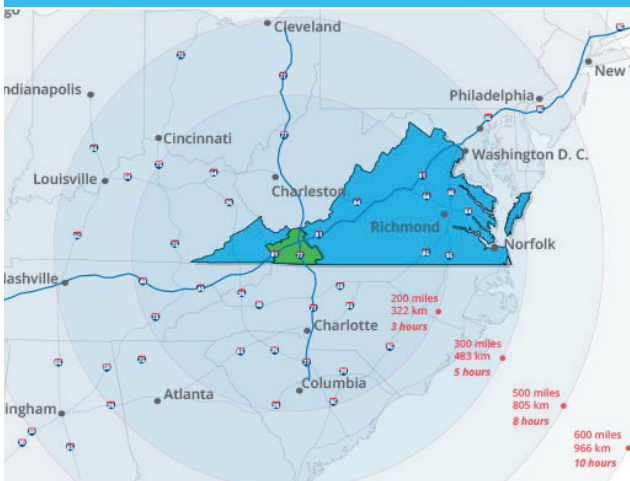




WILDWOOD COMMERCE PARK

MOUNT ROGERS REGIONAL PARTNERSHIP

Strategically situated along I-81 at its crossroads with I-77, MRRP offers market access to two-thirds of the U.S. population within a day's truck drive. MRRP represents a population of nearly 116,000 in five counties and one city in southwestern Virginia. The extended labor market area has a population of more than one million. The civilian labor force totals 567,837 with 54,278 in MRRP and 513,599 in the extended labor area. Virginia is the northernmost right-to-work state on the East Coast and the unionization rate is less than three percent. A key location, an available workforce with outstanding training opportunities, superb quality of life, and a low cost of doing business are huge advantages for locating in MRRP.



MRRP offers a strategic location at the intersection of I-81 and I-77 in southwest Virginia.



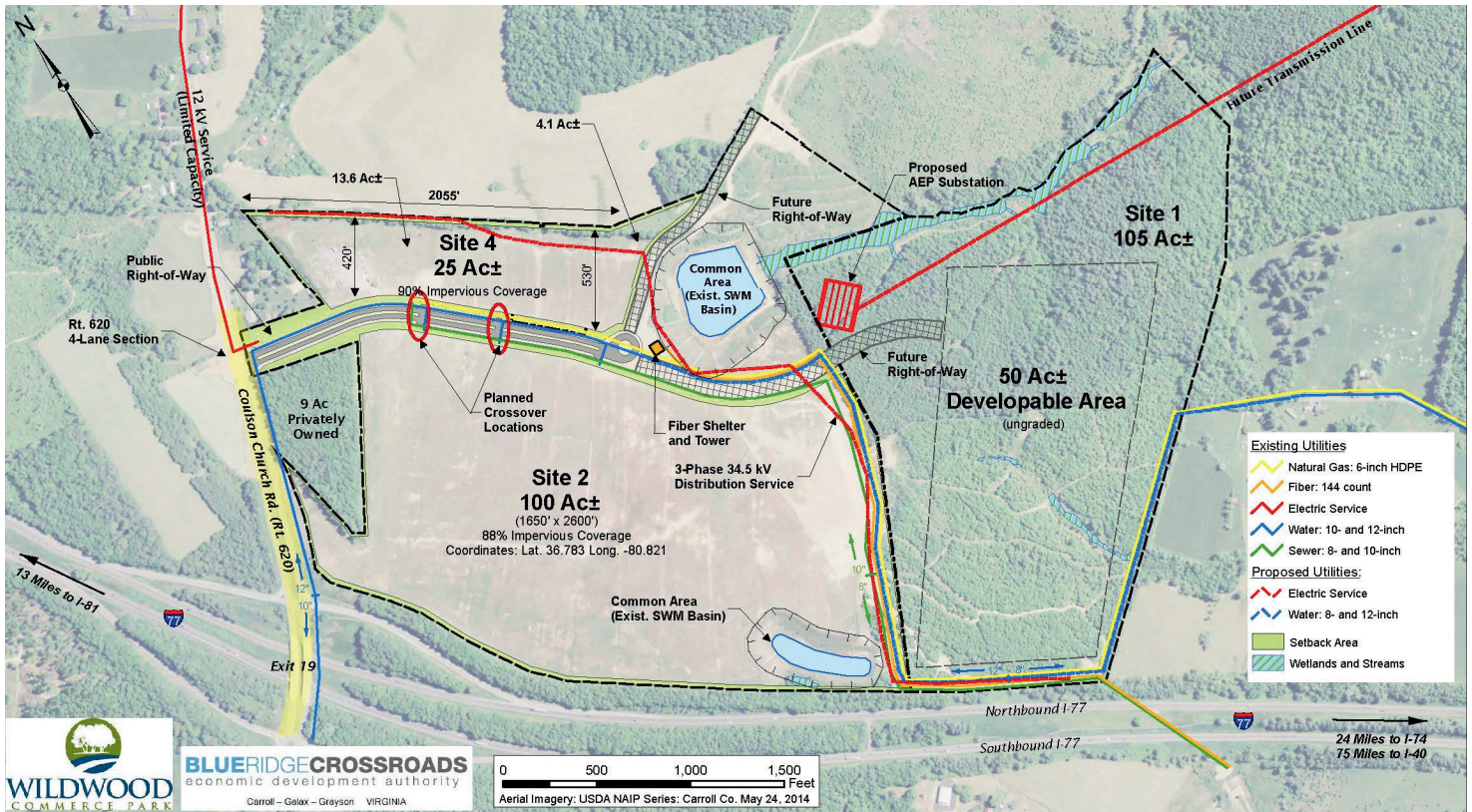
The Blue Ridge Crossroads Economic Development Authority's (BRCEDA) Wildwood Commerce Park is a 237-acre regional industrial park with a 100-acre pad and a 25-acre pad currently graded. Wildwood is adjacent to Exit 19 of I-77, thirteen miles south of I-81. Wildwood is located within HUB and Virginia Enterprise Zones and offers superior interstate access. A regional general aviation airport is within two miles of the park.

New infrastructure (water, sewer, access road, and telecommunications) is in place to serve the park.

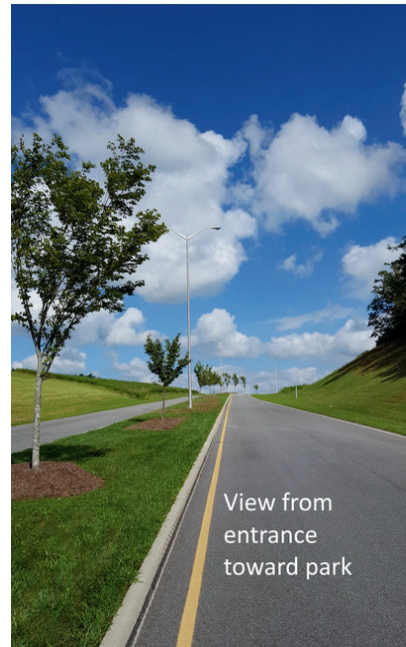
Utility Infrastructure

- **Electrical** - Preliminary engineering underway for a new 138-kV substation.
- **Natural Gas** - 6" distribution line connects park to interstate transmission line.
- **Water** - 12" water line. Available system capacity is 250,000 gpd, expandable to 2.25 million gpd.
- **Wastewater** - 8" gravity sewer line capable of 0.4 MGD.
- **Telecommunication** - Fiber to the park with a direct fiber route to the regional Point of Presence (POP) with multiple providers. Capacity for multiple 10 Gig circuits, DWDM. Redundant high performance wireless link. 1,000 M bit/sec.
- **Access Road** - 2-lane VDOT-maintained access road with potential for 4-lane expansion.

WILDWOOD COMMERCE PARK



- Wildwood Commerce Park is the result of partnerships among Carroll County, the City of Galax, Grayson County, BRCEA, the Virginia Tobacco Commission, and the Commonwealth of Virginia
- Wildwood is ideally situated to serve major population and manufacturing centers to the north and south.



www.i81-i77crossroads.com
www.mountrogersregion.com

Ashlyn Shrewsbury
Mount Rogers Regional Partnership
Interim Executive Director
1000 E. Main St. Wytheville, VA 24382
ashrewsbury@wcc.vccs.edu
276.223.4726

Ashlyn Shrewsbury
Blue Ridge Crossroads Economic Development Authority
Director
1117 E. Stuart Dr. Galax, VA 24333
director@brceda.org
276.601.7727